

SATI PLASTICS

Components according to drawing:
SATI TAILORED



PLASTIC: ACCORDING TO DRAWING

From our many long-time experience
in the production of special metal
components today comes:

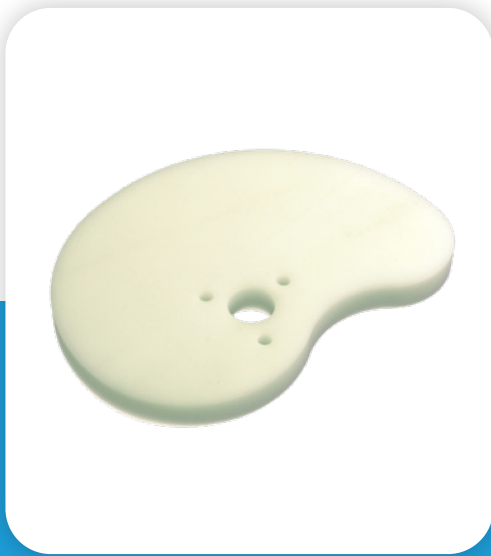
Plastics SATI TAILORED

We can produce components:

- **plates** up to 2000x4000x100 mm
- **parallelepiped** up to 1000x600x600 mm



Three-dimensional shapes realized with **sophisticated CAD software.**



Components produced with latest generation CNC machines.



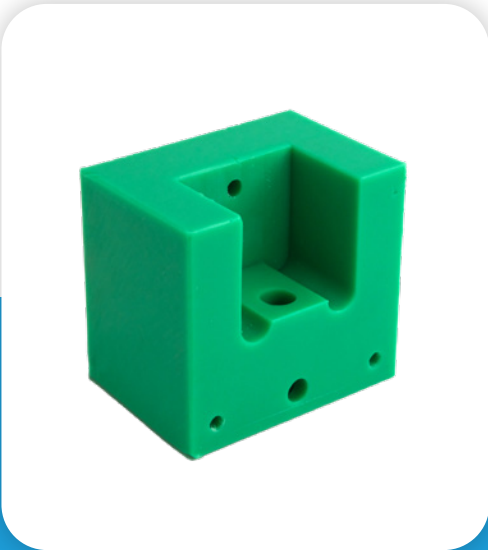
We can produce with **several plastic materials** available on the market.



**Quantities are
not a problem.**



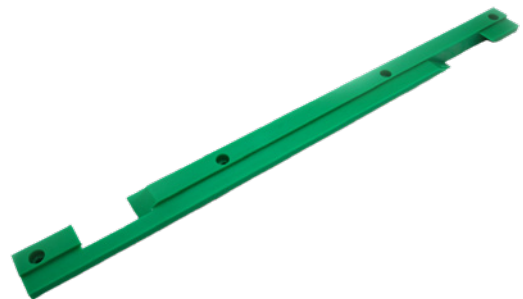
Dimension tolerances are ensured.



We use certified materials.



- Tereftalato di polietilene + lubrificanti solidi
- Tereftalato di polietilene
- Polietilene tereftalato glicole
- Poliossimetilene copolimero + PTFE
- Politetrafluoroetilene
- Polivinilcloruro
- Polivinilidenfluoruro
- Poliammide 4.6
- Poliammide 6 + fibra vetro
- UHMW 5000 Vergine



- Polimetilmetacrilato
 - Polipropilene
 - Polifenilensulfide
 - Politetrafluoroetilene + fibra vetro 25%
 - Politetrafluoroetilene + carbografite 25%
 - Polivinilcloruro
 - Acrilonide-Butadiene-Stirene capolimero
 - Polifenilsulfone
 - Poliammide 6
- ...and many others on request

And our **delivery times**
are absolutely **excellent**.



Sati

Your global supplier



Sati S.p.A. con Unico Socio | Via 2 Agosto 1980, 5/A
Zona Ind. via Lunga, 40056 Loc. Crespellano Valsamoggia (BO) | Italy
Comm.le Italia: tel. +39 051 6721611 | fax +39 051 969645
Export dpt: tel. +39 051 6721625 | fax +39 051 969646
satispa.com | info@satispa.com | Member of Ammega Group